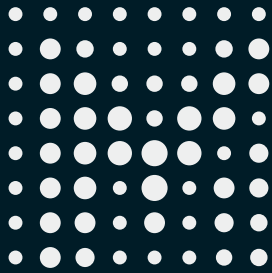


MIZU LINK

INTELLIGENT WATER MANAGEMENT

HITACHI

Inspire the Next



MIZU LINK

Your Intelligent Cloud Platform for Resource Optimization.

Mizu Link is an integrated enterprise customer portal that empowers organizations to monitor, manage, and optimize their water and energy systems through a single, user-friendly interface. By seamlessly connecting with our cutting-edge solutions, including Water Remote Monitoring (WRM), 365 Energy Management, PoU Smart Water Monitoring, and Streametric Lifestyle, Mizu Link provides a comprehensive overview of your operations, enabling data-driven decision-making and continuous improvement.

Key Benefits

1. **Centralized Control:** Access and manage all your water and energy solutions from a single, intuitive platform
2. **Real-Time Insights:** Gain valuable, real-time insights into your operations through advanced analytics and customizable dashboards
3. **Enhanced Efficiency:** Identify opportunities for optimization, reduce resource consumption, and improve overall operational efficiency
4. **Customizable Alerts:** Set up personalized alerts and notifications to stay informed about critical events, anomalies, or performance thresholds
5. **Comprehensive Reporting:** Generate detailed reports on resource usage, cost savings, sustainability metrics, and more to support informed decision-making and regulatory compliance
6. **Map Functionality:** Interactive map visualization for asset monitoring and geographic optimization. Identify underperformers and optimize resource allocation through spatial insights.
7. **Secure and Scalable:** Benefit from enterprise-grade security, data privacy, and scalability to support your growing needs and ensure peace of mind
8. **Multi-Tenancy:** Support multiple users, roles, and permissions within your organization or collaborate with your customers, channel partners, and other stake

HITACHI

Inspire the Next

Remote Monitoring: Water & Wastewater Facilities

With Water Remote Monitoring (WRM), you can effortlessly track and optimize the performance of your water treatment systems, ensuring optimal efficiency and reliability.



Take control of your pools and aquatic facilities: Streametric Lifestyle 24/7 intelligent monitoring, analyzes your water quality and offers you the simplest solution.

PoU Solution

Utilizing IoT and AI for intelligent water monitoring. The PoU solution measures consumption and quality parameters at PoU and PoE, offering insights for water management, sustainability, and efficiency.

360 Energy Management

Unleash the full potential of your energy management strategies, driving operational excellence, reducing costs, and contributing to a greener future.

waterSAVE®

WaterSAVE is a SMART system using IoT technology to detect water wastage from tanks due to incidental running inlets. Linked to internet and cellular networks, it promptly alerts appointed responders via email and SMS, facilitating quick action to prevent excessive water loss.

Remote Monitoring: Water & Wastewater Facilities

Unlock the full potential of your water treatment systems with WRM. Achieve optimal performance through real-time monitoring, advanced analytics, and actionable insights. Streamline operations, reduce costs, and ensure the delivery of high-quality water for your business needs.

WATER REMOTE MONITORING

Empowering Water Management with Intelligent Remote Monitoring

Water Remote Monitoring (WRM), developed by Hitachi Aqua-Tech Engineering Pte. Ltd, is a cutting-edge solution for remotely monitoring and analyzing water treatment plants. WRM ensures optimal efficiency and reliability by effortlessly tracking and optimizing the performance of your water treatment systems.

With a comprehensive suite of features including real-time data visualization, customizable alerts, and in-depth analytics, WRM leverages advanced IoT technology and the integrated enterprise customer portal (MIZU LINK) to enable data-driven decisions and proactive issue resolution, minimizing downtime and maximizing productivity.

BENEFITS

- ✔ Operational Efficiency: Identify process optimizations and energy savings.
- ✔ Cost Reduction: Reduce operational costs through proactive maintenance.
- ✔ Sustainability: Minimize water wastage, chemical usage, and energy consumption.
- ✔ Compliance: Ensure regulatory standards and minimize environmental impact.
- ✔ Decision-Making: Enhance decisions with data-driven insights and analytics.
- ✔ System Reliability: Improve reliability and minimize downtime.

FEATURES



Real-Time Monitoring: Track parameters such as pH, conductivity, flow rate, and energy consumption.



Customizable Alerts: Proactive maintenance notifications.



Intuitive Dashboard: Interactive charts and grids for easy data interpretation.



Secure Cloud Storage: Access data anytime, anywhere.



System Integration: Seamless with existing water treatment systems (e.g., RO, STP).



Comprehensive Reporting: Data export for compliance and auditing.



Scalable Solution: Suitable for various industries and applications.

©Hitachi Aqua-Tech Engineering Pte.Ltd.

40 Changi South Street 1, Singapore 486764

Tel: +65 6746 1688, +65 6588 2033

Fax: +65 6747 8224, +65 6588 2022

Email: haqt.sales.ov@hitachi.com

Website: www.hitachi-aqt.com



Copyright © 2024 Hitachi Aqua-Tech Engineering Pte. Ltd. All rights reserved.



STREAMETRIC L I F E S T Y L E



Our technology helps you monitor water quality in a wide range of applications:



SWIMMING POOLS



WATER PLAYGROUNDS



FISH PONDS



WELLNESS SPA



COOLING TOWERS

WATER QUALITY MANAGEMENT

Take control of your pools and aquatic facilities: Streametric Lifestyle 24/7 intelligent monitoring, analyzes your water quality and offers you the simplest solution. Overdosing and over pumping are a thing of the past, saving you energy and time.

Streametric Lifestyle's consistent real-time monitoring puts water management at your fingertips. No more manual sampling of water and time-consuming on-site monitoring. Get cleaner and healthier conditions via a user-friendly online dashboard -anytime, anywhere.

AUTOMATED WATER MONITORING

- ✓ pH
- ✓ ORP
- ✓ Free Chlorine
- ✓ Temperature

Upgrade your water systems with an automated water quality management and control solution. With Streametric Lifestyle, dealing with strict water regulations becomes a breeze. Thanks to automatic control, the system accurately and continuously monitors your key water quality parameters.

We offer a wide range of applications: Our technology helps you monitor water quality in swimming pools, water playgrounds, fish tanks and cooling water in buildings or industry.

FEATURES



Real-time consistent water quality monitoring



Accurate dosing to achieve ideal parameters



Remote management via computer or smartphone

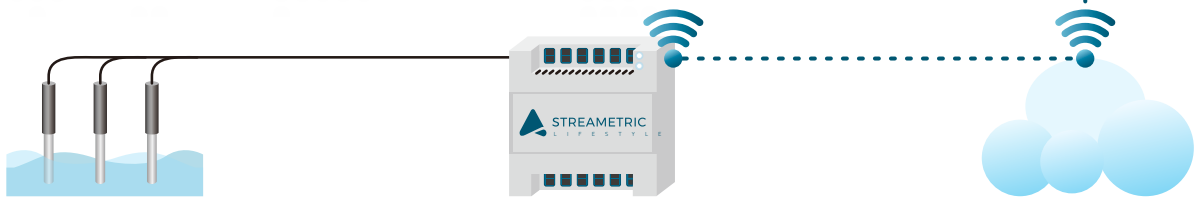
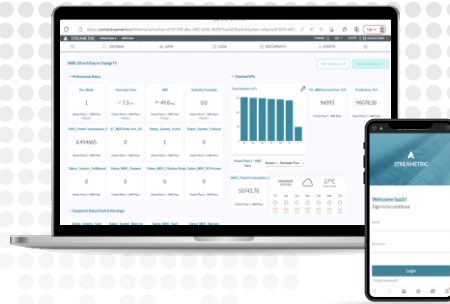


Alarm system to notify irregular readings



Energy-saving





WATER PARAMETER SENSORS

Installed inside the pump room, the sensor probes detect pH, Free chlorine, Temperature and ORP levels of your Aquatic Facilities.

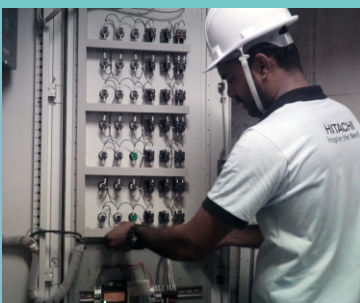
IoT MODULE

Sensor Agnostic gateway retrieve pre-process sensor data and control dosing.

STREAMETRIC CLOUD

Data are stored and processed on secured cloud. Through cloud storage data can be accessed remotely on any Internet connected device.

EASY INSTALLATION AND CONFIGURATION



1. INSTALL

Easy onsite installation includes connecting the power, LAN and internet, (ethernet/cable, Wi-Fi, etc.) .



2. CONFIGURE

According to your needs, we set up data collection from the sensors and establish the gateway for cloud integration.



3. LOG IN

Login to your portal, and immediately begin discovering, predicting and improving the entire system.

©Hitachi Aqua-Tech Engineering Pte.Ltd.

40 Changi South Street 1, Singapore 486764

Tel: +65 6746 1688, +65 6588 2033

Fax: +65 6747 8224, +65 6588 2022

Email: haqt.sales.ov@hitachi.com

Website: www.hitachi-aqt.com



Copyright © 2024 Hitachi Aqua-Tech Engineering Pte. Ltd. All rights reserved.

PoU Solution

Smart Water Monitoring Solutions for a Sustainable Future

Our PoU application is a leading intelligent water monitoring solution integrated with Mizu Link, leveraging IoT technology and AI-enabled edge and cloud data processing. The solution helps businesses and organizations measure water consumption and quality parameters at any point-of-use (PoU) and point-of-entry (PoE), providing valuable insights for water management, sustainability, and operational efficiency.

With Mizu Link PoU solution, you can harness the power of data to optimize your water management, reduce costs, and contribute to a more sustainable future.

BENEFITS

- ✔ Plug & Play Installation: Easily install sensors directly into your water systems for quick integration.
- ✔ Real-Time Monitoring: Remote 24/7 tracking of water consumption, flow rate, pressure, and more.
- ✔ Intelligent Analytics: AI-powered analysis for actionable insights and optimization opportunities.
- ✔ Leak Detection & Alerts: Instant notifications for leaks, unusual usage, or other issues, facilitating proactive maintenance and reducing water waste.
- ✔ Customizable Dashboards: User-friendly dashboards offer a centralized view of water systems, consumption trends, and key metrics.
- ✔ Sustainable Impact Reporting: Automated reports on water savings, efficiency gains, and sustainability efforts demonstrate environmental commitment.

Our technology enables remote monitoring of water consumption within a range of system



WATER DISPENSERS



COOLING SYSTEMS



IRRIGATION SYSTEMS



RESTROOM FIXTURES



INDUSTRIAL FACILITIES

FEATURES

1. Reduce water consumption and associated costs
2. Optimize water system performance and efficiency
3. Minimize downtime and extend asset life through predictive maintenance
4. Ensure water quality and safety compliance
Demonstrate sustainability commitment and meet ESG goals
5. Ensure compliance with water usage regulations and reporting requirements
Gain valuable insights for informed decision-making and continuous improvement



360° Energy Management System

With 360 Energy Management Solution, you can unleash the full potential of your energy management strategies, driving operational excellence, reducing costs, and contributing to a greener future.

An Intelligent, Data-Powered Platform for Unified Energy Management, Automated Optimization, and Comprehensive CMMS Functionalities.

The 360° Energy Management System is a comprehensive energy management solution with added functionalities such as Computerized Maintenance Management System (CMMS), HVAC monitoring, waste management, facility management, and more. Managed by Hitachi Aqua-Tech Engineering Pte, Ltd, this solution helps organizations monitor, track, and optimize their day-to-day business operations. By leveraging cutting-edge technologies and seamlessly integrating with Mizu Link, our enterprise customer portal, the solution enables you to make data-driven decisions, reduce energy costs, minimize carbon emissions, and streamline maintenance processes.

BENEFITS

- ✓ Centralized monitoring and management of energy, maintenance, and facility operations.
- ✓ Identification of inefficiencies for energy and cost savings.
- ✓ Automated optimization of HVAC, lighting, and compressed air systems.
- ✓ Improved maintenance planning and asset life cycle management.
- ✓ System efficiency simulation, fault diagnosis, and predictive maintenance.
- ✓ Reduction of carbon footprint and enhanced waste management.
- ✓ Easy integration with existing systems and customizable dashboards.

FEATURES

-  Energy Metering: Real-time monitoring and analysis of utility usage and energy consumption.
-  HVAC Optimization: Automated management of HVAC systems for improved efficiency.
-  Waste Management: Efficient tracking and reporting of waste processes.
-  Facility Management: Tools for managing building assets, space, and occupant comfort.
-  Microgrid & DER Integration: Control of renewable energy assets for optimized performance.
-  Streamlined EHS Reporting: Automated reporting for ESG compliance.
-  Advanced CMMS: Work order management, asset tracking, predictive maintenance, and mobile access.





LEAK DETECTION

WaterSAVE comprises a SMART system infrastructure leveraging IoT technology to identify water wastage from tanks due to accidental running of the inlet. Linked to internet and cellular networks, it autonomously dispatches email and SMS alerts to designated first responders. Swift recognition and intervention halt excessive water loss.

FEATURES

- ✓ Push detection for water wastage (always-on)
- ✓ Instantaneous alert to the appointed first responder
- ✓ Self-regulated system with minimal upkeep required
- ✓ Easy implementation for existing and new infrastructure
- ✓ Cost and Environment Saving Customisable Price Package

Our technology enables remote monitoring of water leaks within a range of system applications.

DOMESTIC WATER TANK

BALANCING TANK

IRRIGATION TANK

SPRINKLE TANK

